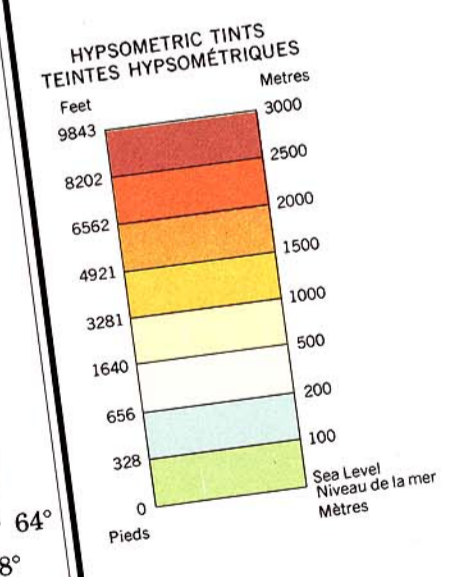
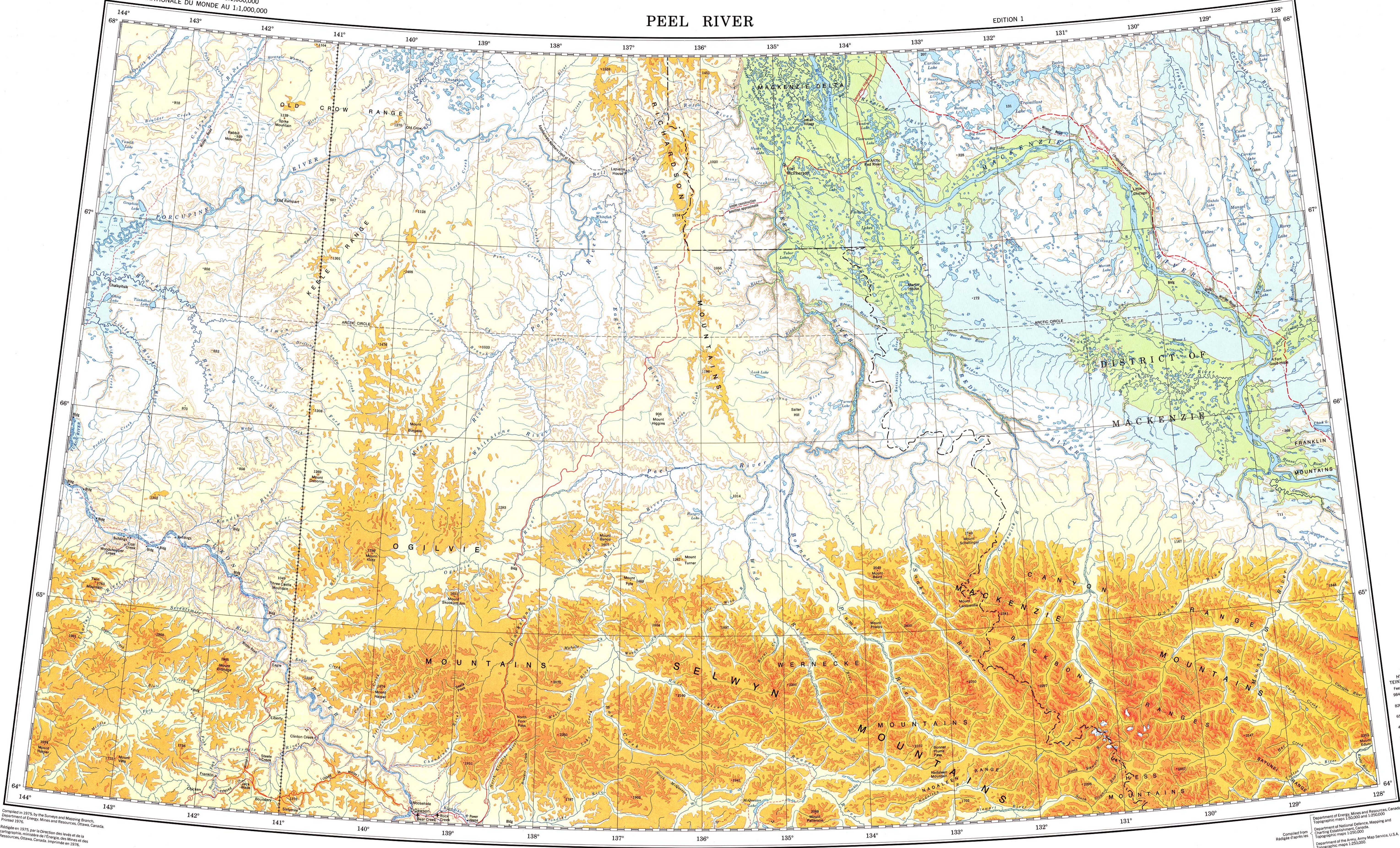


PEEL RIVER

EDITION 1

NQ-7/8/9*

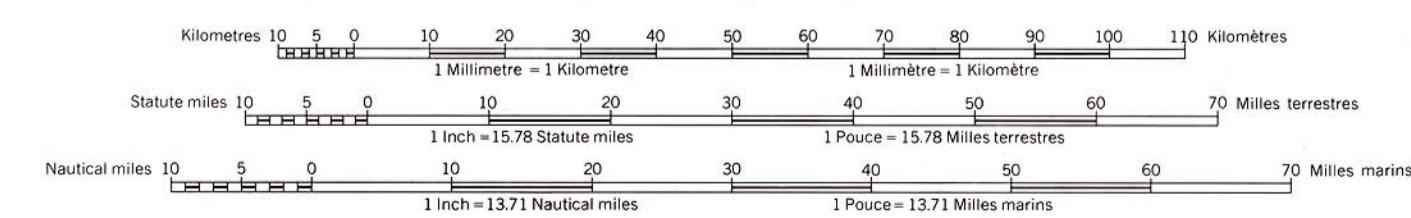


Completed in 1976 by the Surveys and Mapping Branch,
 Department of Energy, Mines and Resources, Ottawa, Canada.
 Printed 1976.

Department of Energy, Mines and Resources, Canada.
 Topographic maps 1:500,000 and 1:250,000.
 Department of National Defence, Mapping and
 Charting Establishment, Canada.
 Topographic maps 1:250,000.
 Department of the Army, Army Map Service, U.S.A.
 Topographic maps 1:250,000.

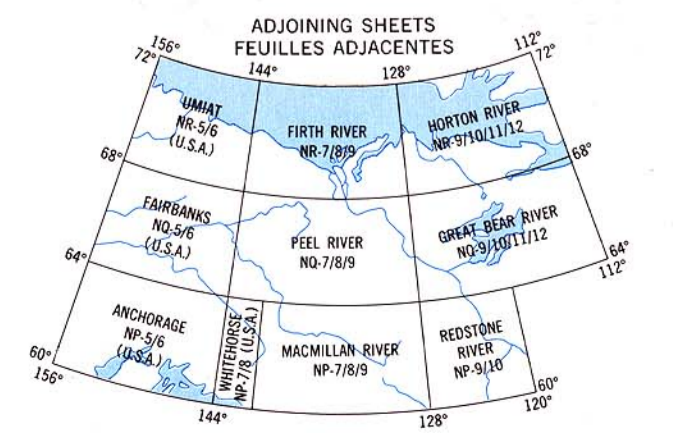
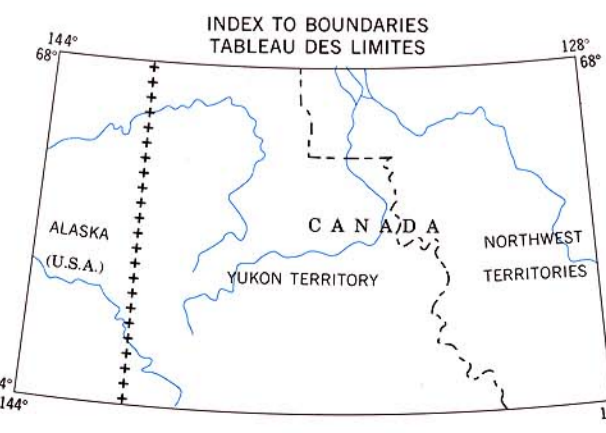
Lambert Conformal Conic Projection Projection conique conforme de Lambert

SCALE 1:1,000,000 ÉCHELLE



REFERENCE	LEGENDE
Main highway	Route principale
Secondary road	Route secondaire
Other road	Autre route
Trail or track	Sentier ou piste
Ferry	Bac
Boundary, international	Frontière internationale
Boundary, territorial	Frontière territoriale

Copies may be obtained from the Canada Map Office,
 Department of Energy, Mines and Resources, Ottawa,
 or your nearest map dealer.
 © Canada Copyrights Reserved 1976



REFERENCE	LEGENDE
Town, population 500-5,000	Ville, 500-5,000 habitants
Town, population under 500	Ville, moins de 500 habitants
Mine	Mine
Airfield	Aérodrome
Icefield, glacier	Champ de glace, glacier
Marsh or swamp	Marais ou marécage
Contours (in metres)	Courbes de niveau (en mètres)
Elevation (in metres)	Altitude (en mètres)

On cartes soit en vente au Bureau des Cartes du Canada,
 ministre de l'Énergie, des Mines et des Ressources, Ottawa,
 ou chez le vendeur le plus près.
 © Canada 1976, tous droits réservés